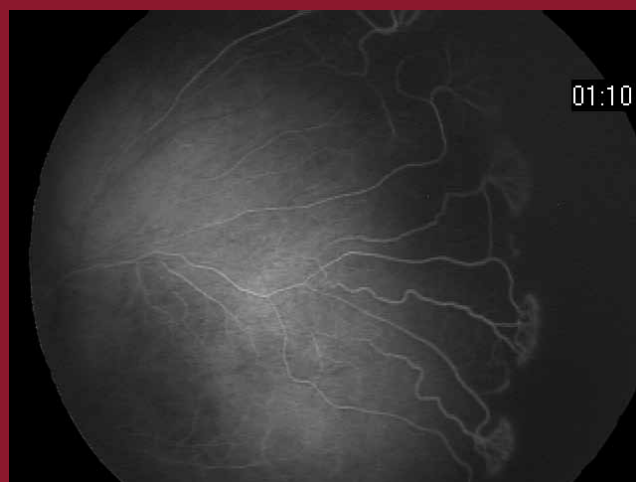
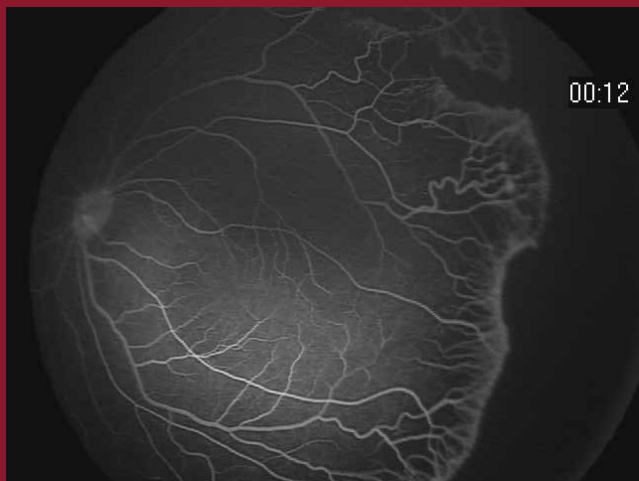


RetCam 3™ Fluorescein Angiography



Features

- *Diagnostic aid to examine the perfusion of the retinal blood vessels*
- *Retina is illuminated with an excitation blue light and photographed as fluorescent dye is injected into the blood stream*
- *Fluorescence emitted by the dye is photo documented as it transits through the vessels*
- *Rapid series of image is captured as the fluorescein dye reaches the retinal circulation*
- *One photo every second or every two seconds is captured for the first 20-30 seconds after the dye appears in the eye during the early phase*

Benefits

- *The extreme contrast of fluorescein angiography (FA) helps to differentiate Coats Disease from Retinoblastoma diagnosis*
- *FA provides extremely sharp visualization of leaking vessel defects and neovascularization in ROP and blockage of retinal vessels*
- *Vasculature structure - vascular vs. avascular*
- *FA may help detect microaneurysms in the posterior chamber*

RetCam 3™ Fluorescein Angiography

RetCam 3 is an advanced, fully integrated system that delivers the next generation of ophthalmic visualization, photo documentation and ease of use. When equipped with the fluorescein angiography (FA) module, it provides users with the ability to create on-screen information displays, including timer, frame number and frame rate that clearly demonstrate the absence or presence of blood flow within the eye.



FA Module Close-up



- 1 Power Switch
- 2 Fiber optic (lamp) connector
- 3 Adjust FA intensity

Technical Specifications

Operating Power:	400 Watts (nominal)
Input Voltage*:	90-130 VAC and 200-240 VAC at 50-60 Hertz
Ignition Voltage:	>25 Kilovolts
Lifetime:	200 hours (100 hours warranty)
Fuse Holder:	Two 5mm 6.3A fuses
Dimension:	16 x 8.5 x 5.75 inches high, or 406 x 216 x 146 mm high
Weight:	16 lbs., or 7.2 kg
Environmental:	Operating temperature range: 20° C to 40° C Storage temperature range: -20° C to 85°C

*Autoselect

